

PORTFOLIO



HAYA NASSER AL - IBRAHIM

INTERIOR DESIGNER

+974 50523523

hayabintn@hotmail.com

Doha - Qatar

Retail Shop - Barber Shop

The Desert Club

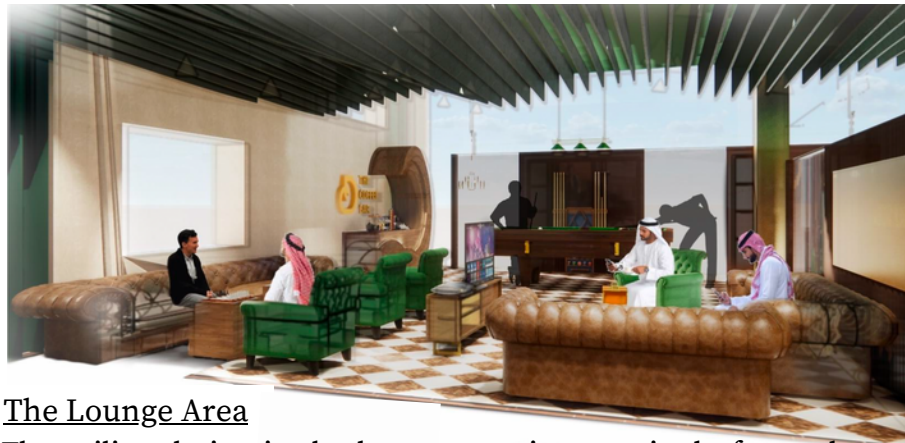
Concept Statement

Is to provide an exclusive and authentic barber shop experience through the immersion of all five senses in a therapeutic environment.



Store Front

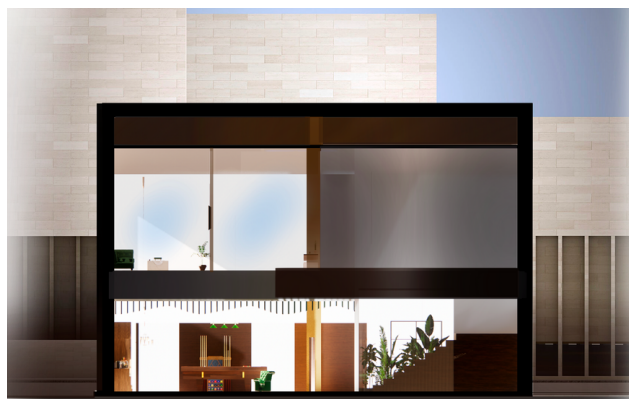
As for the storefront there is a display where customers can come to view the displayed products and purchase them or come to pay for their service.



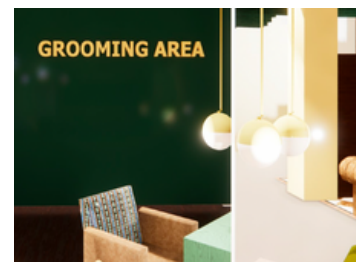
The Lounge Area

The ceiling design in the lounge area is comprised of wavy acoustical panels that brings back the desert inspirational factor. Having it made out of acoustical panels helps reduce the noise produced by the hair grooming equipments.

Section - A



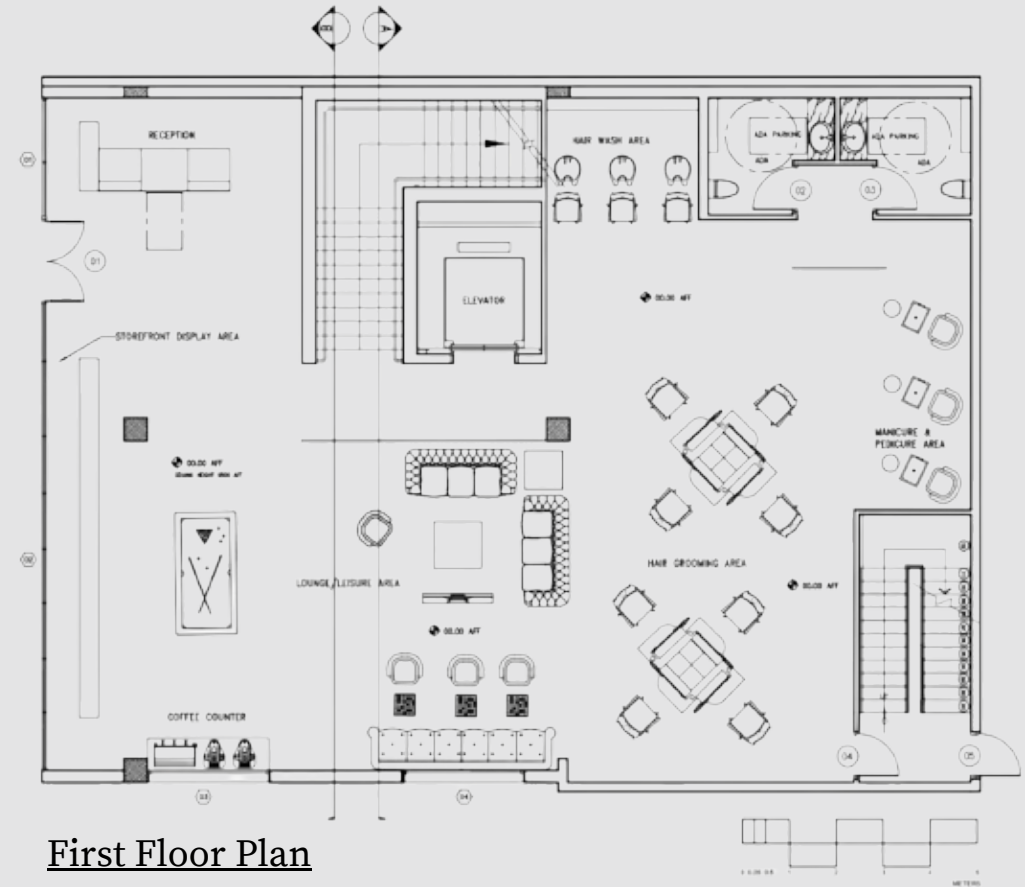
Environmental Graphics in Interior Space



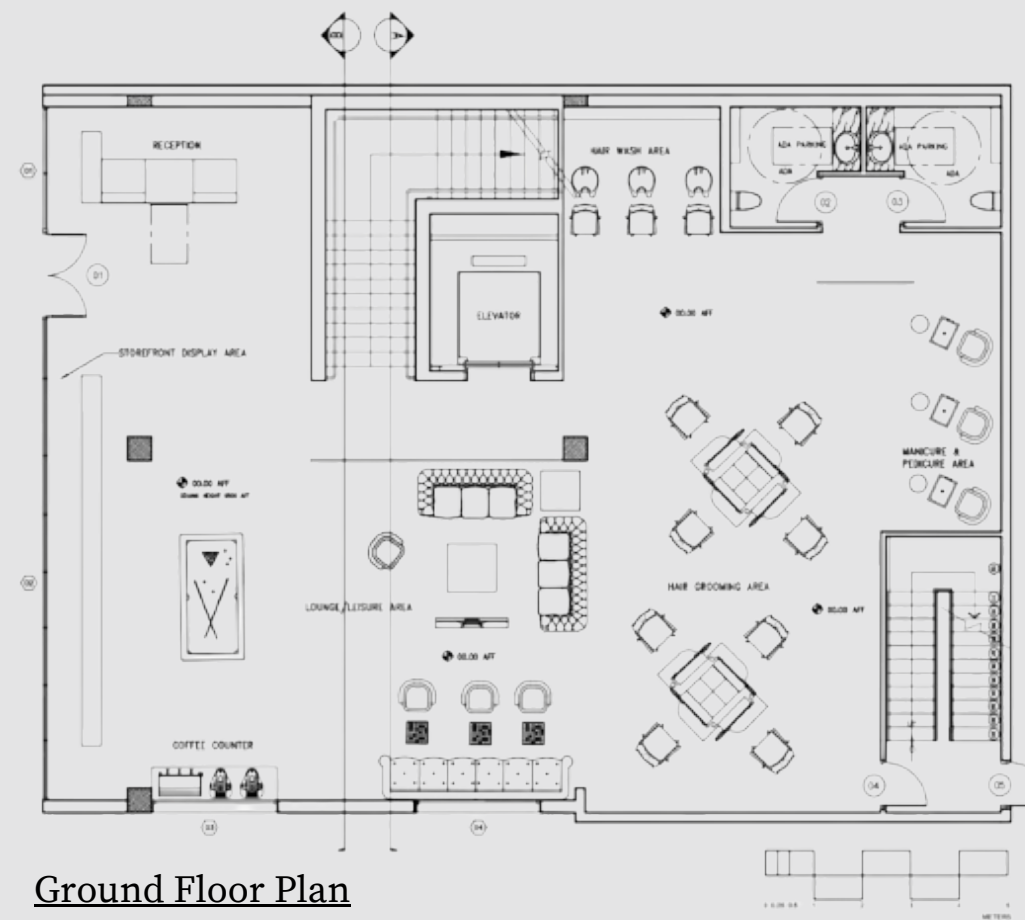
Section - B



For the floor plan it went through many revisions it was teamwork



First Floor Plan



Ground Floor Plan

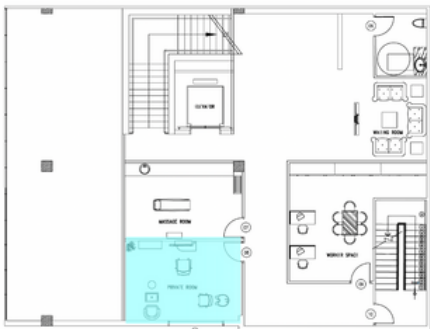
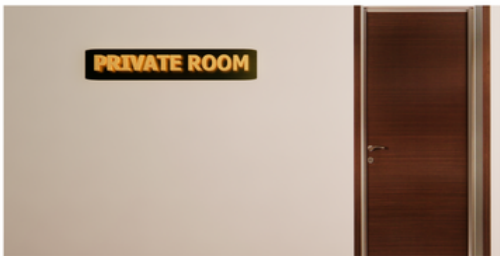
Retail Shop - Barber Shop

Renderings & Classification

Environmental Graphics

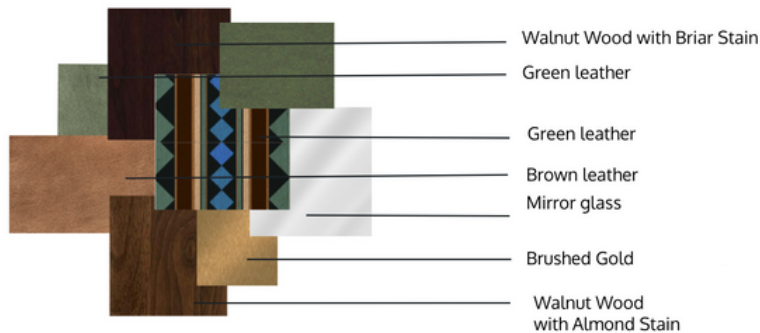
Key Plan

Private Room - For occasions such as wedding preparations



Material Board

FF&E

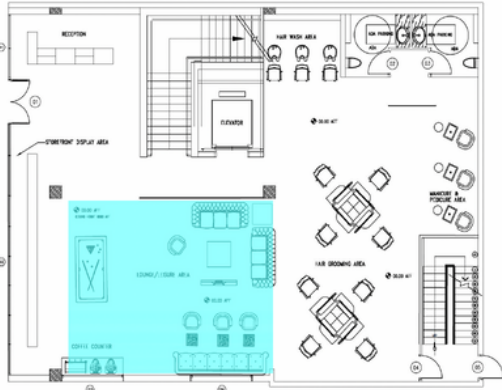
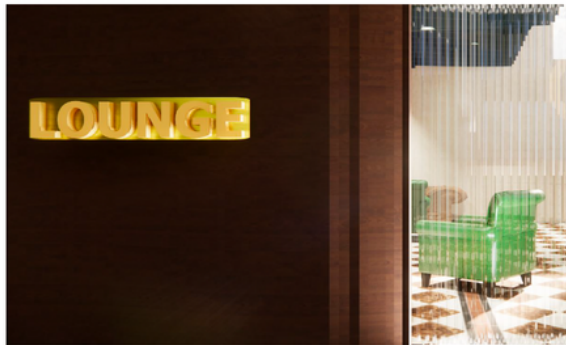


The private room area is a booked room by our loyal customers. It's used for special occasions such as weddings as it gives an exclusive care and attention to that customer.

Environmental Graphics

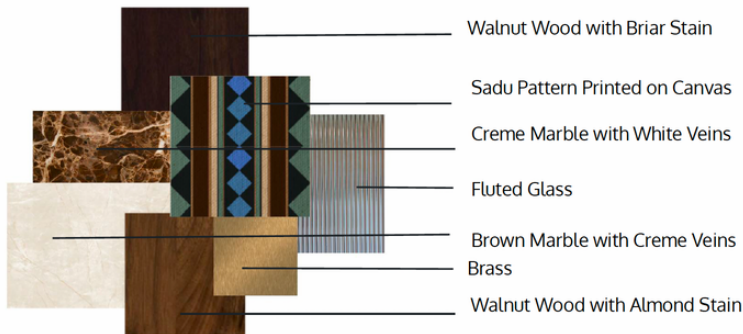
Key Plan

Lounge - waiting area



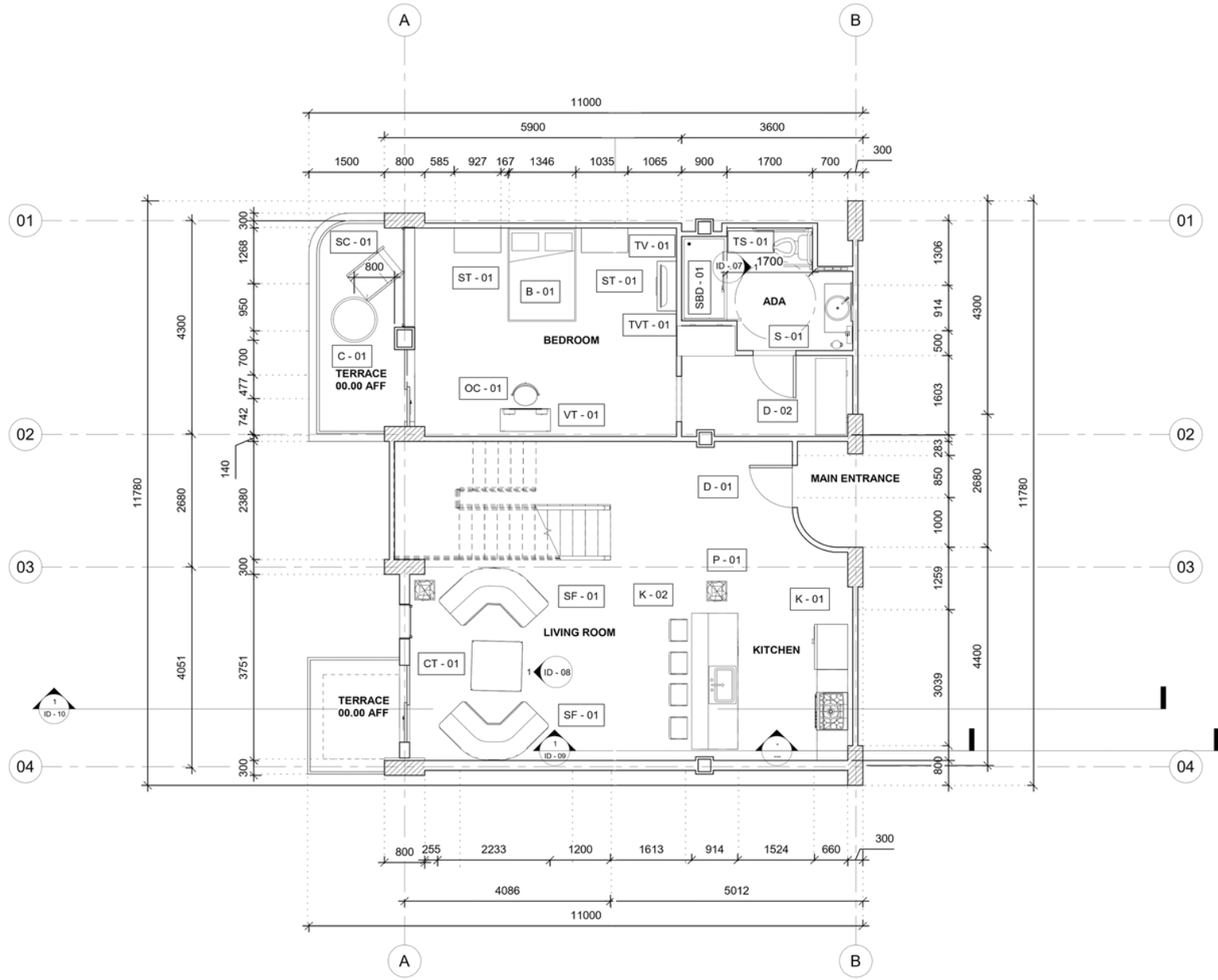
Material Board

FF&E



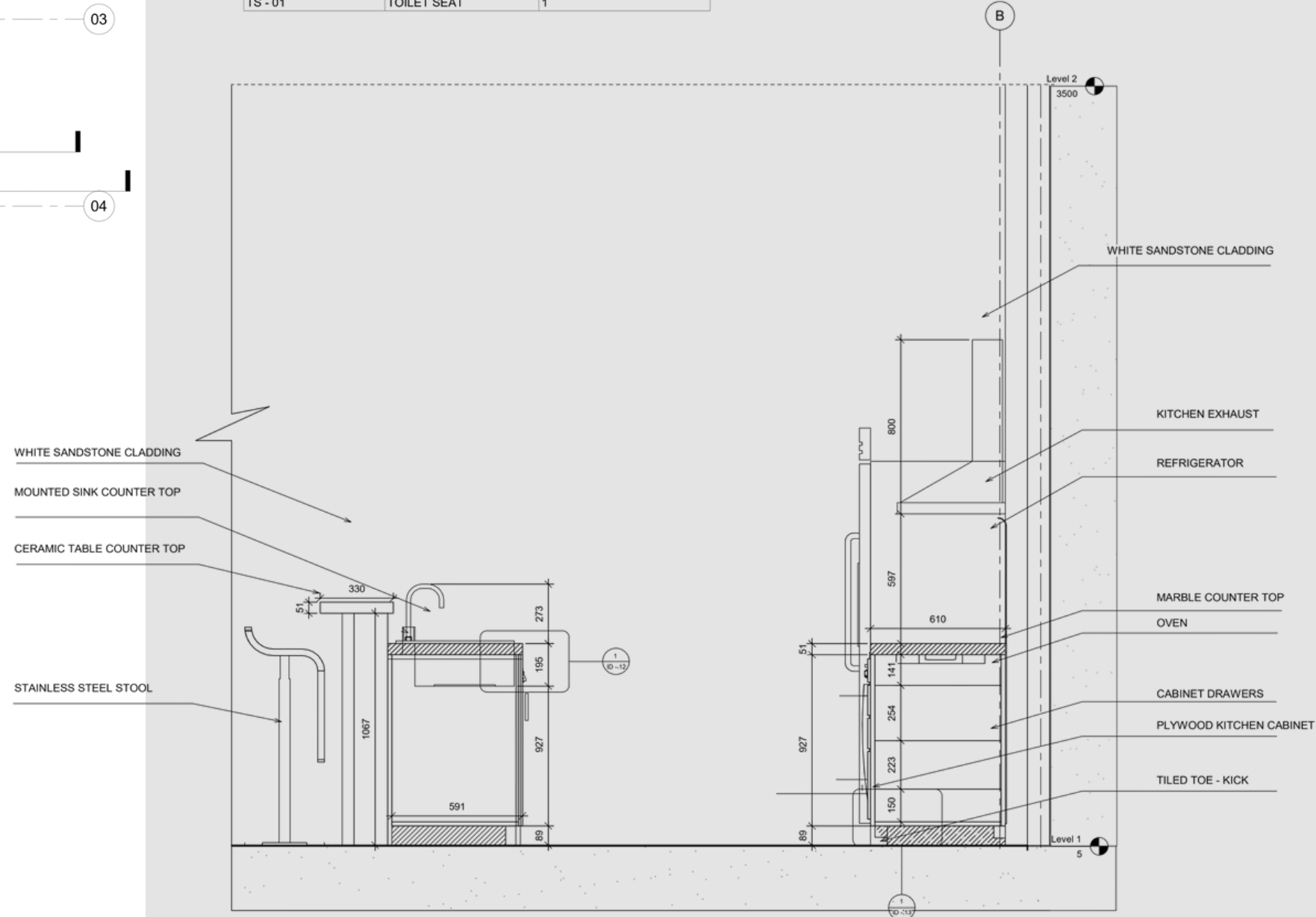
The lounging area is considered as a waiting room as well as a leisure area as it contains different recreational activities such as pool tables, chess tables, and Playstation TV.

CONSTRUCTION DOCUMENTS - HOTEL PROJECT



FURNITURE PLAN

FURNITURE SCHEDULE		
CODE	PRODUCT NAME	QUANTITY
SF - 01	WHITE CURVED SOFA	2
CT - 01	COFFE TABLE	1
P - 01	IKEA PLANT VASE	2
K - 01	KITCHEN SETUP	1
K - 02	KITCHEN DINNING AREA	1
D - 01	SINGLE DOOR	2
C - 01	CLOTHING CABINET	2
S - 01	BATHROOM WOOD SINK	1
TVT - 01	TV TABLE	1
T - 01	ROOM RECTANGLE TABLE	1
OC - 01	OVALVANITY CHAIR	1
VT - 01	VANITY TABLE	1
ST - 01	SQUARE BED SIDE TABLE	2
B - 01	BED	2
SC - 01	SWINING CHAIR	1
C - 01	CIRCLE WOOD OUTDOOR TABLE	1
SBD - 01	SLIDING BATHROOM DOOR	1
TV - 01	TV SOCKET	1
TS - 01	TOILET SEAT	1



SECTION A

THE ANDALAS - HOTEL PROJECT & LIGHT MODEL

Complementary Color Scheme

This project aims to create a bedroom based on complementary color scheme. The chosen colors are Blue & Yellow. Im focusing on using the hues of yellow and blue and tints of light yellow/ dark yellow - soft blue.

Mood Board



Collage

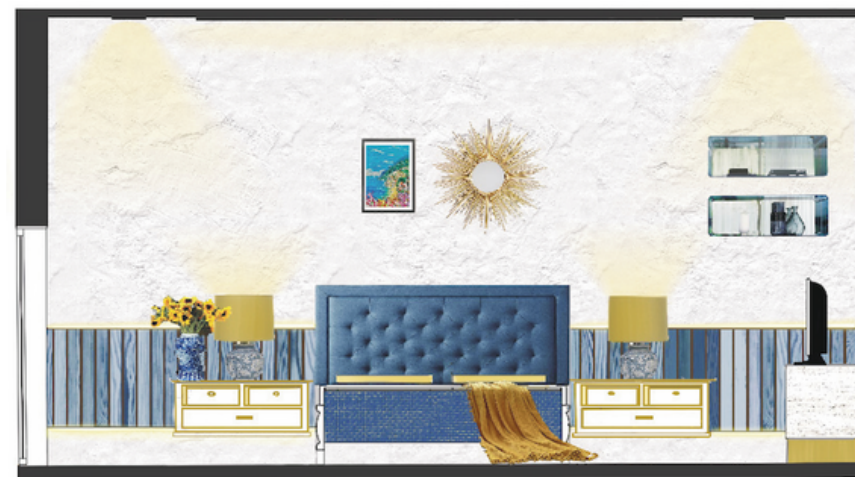


Render Hotel Floor Plan



Furniture Plan

Render Hotel Elevation & Section



Elevation

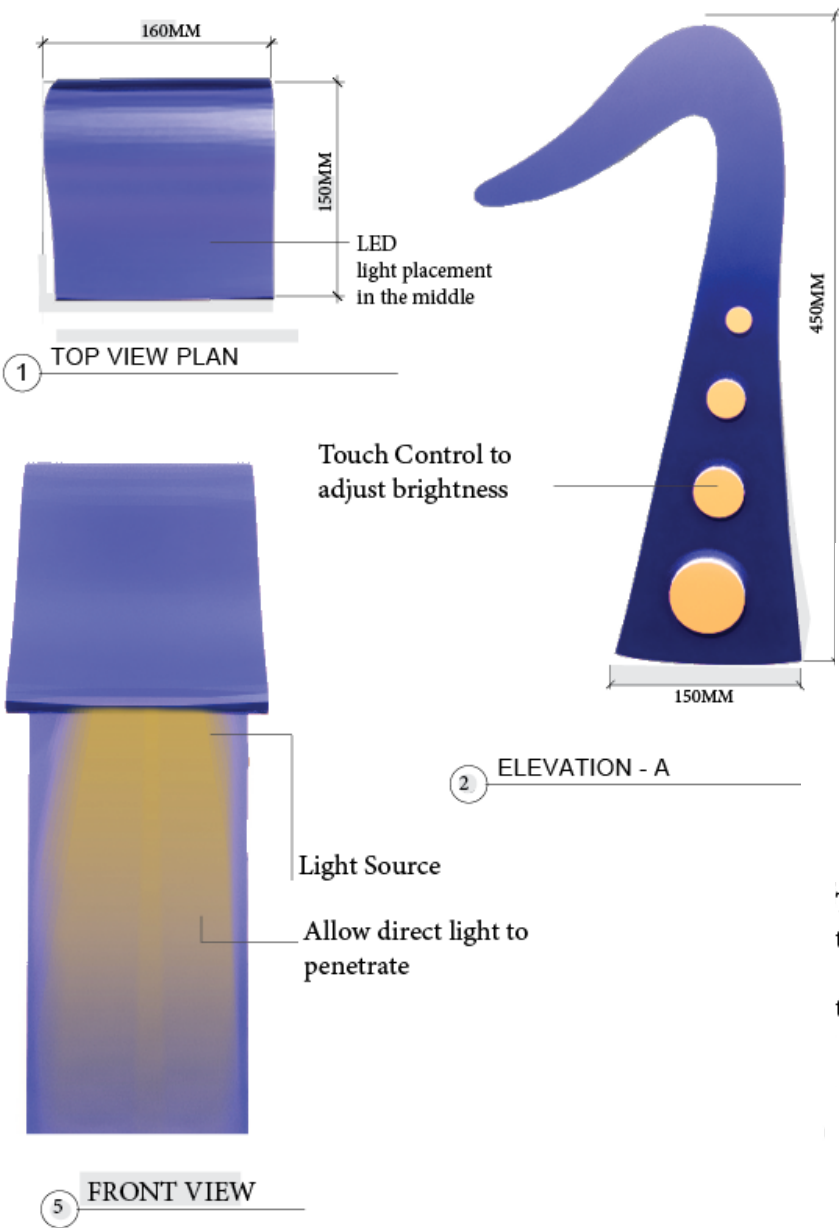


Section

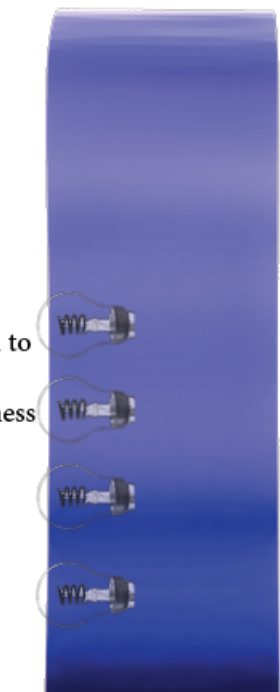
THE ANDALAS - HOTEL PROJECT & LIGHT MODEL

The Andlas

The Andlas is a contemporary luminaire table lamp that draws inspiration from Yami Kusama. Her organic shape served as my inspiration for the table lamp for the hotel room. The unique form gives a different impression viewing the lamp from an angel.



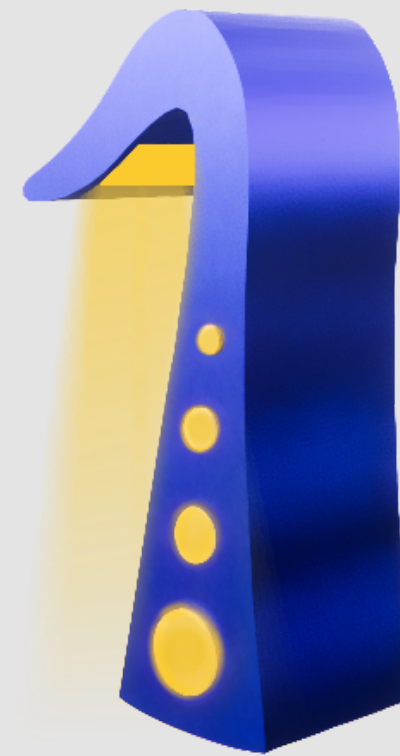
3 SIDE - ELEVATION



4 SECTION - A



Type	Task & Decorative Light
Manufacturer	Ikea
Model Identifier	LED1934G3
Color Temperature	Warm Yellow Glow
Energy Efficiency Class	A++
Weighted energy consumption	3kWh/1000h
Power	25000h
Nominal life time	25000 cycles
Rated Wattage	2.7 Watt
Rated Luminous Flux	250lm
Lamp power factor	0.5
Lumen Maintenance	70%



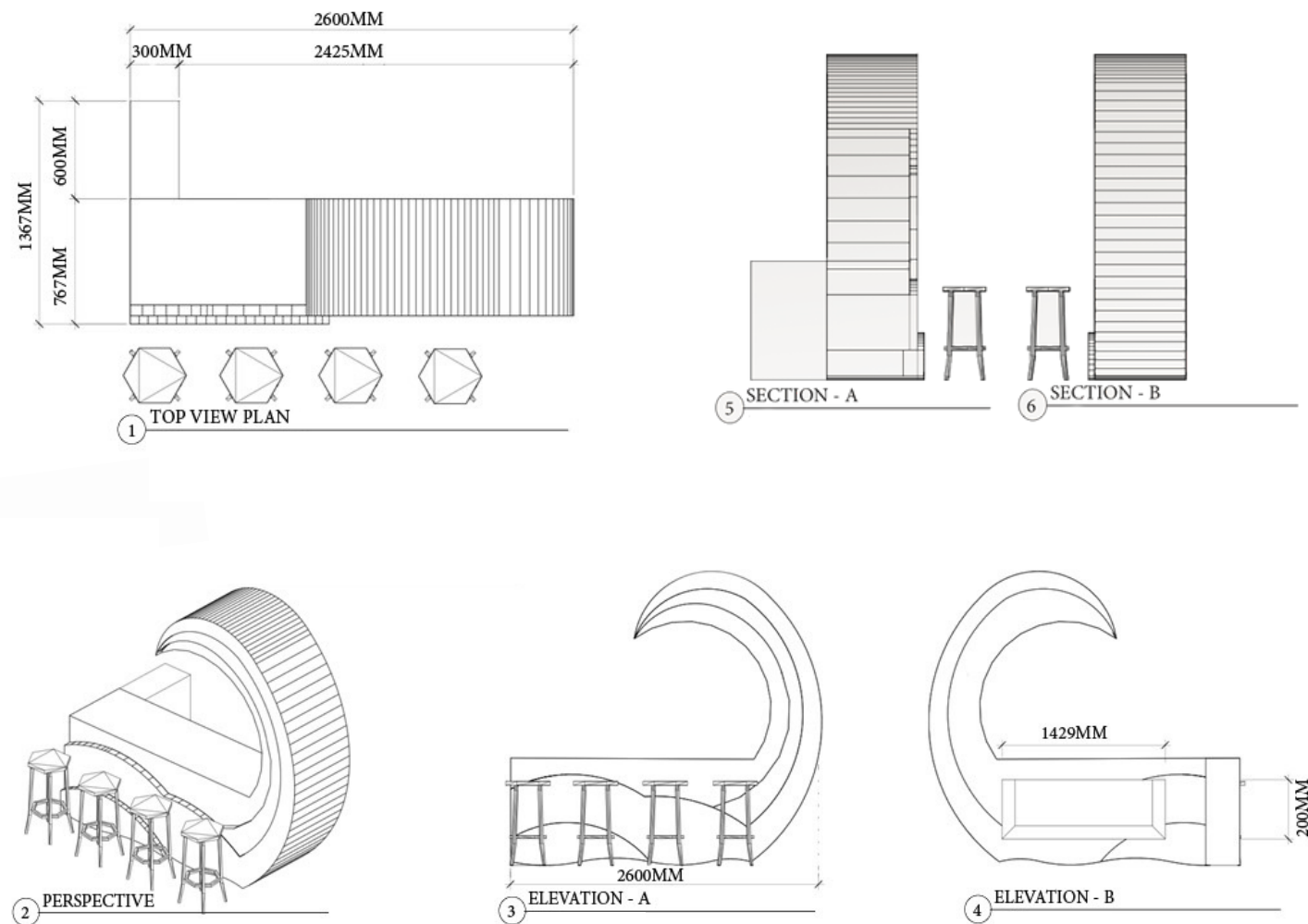
Rendered Room with Light



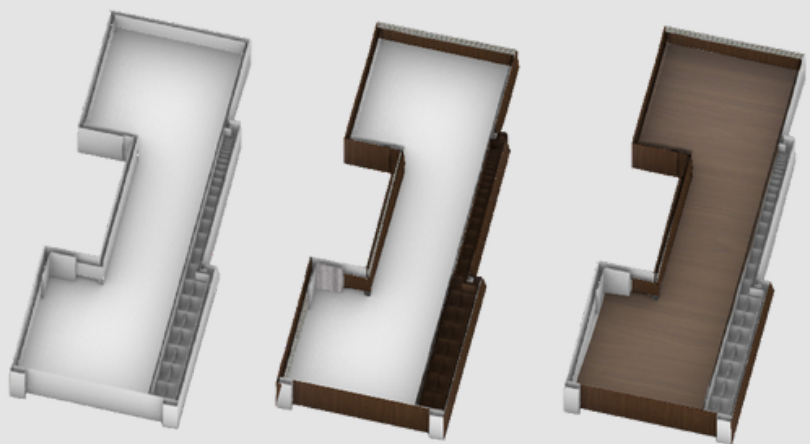
Building System- TELL - A - TALE - DETAIL : A STORY OF SYSTEMS INTEGRATION



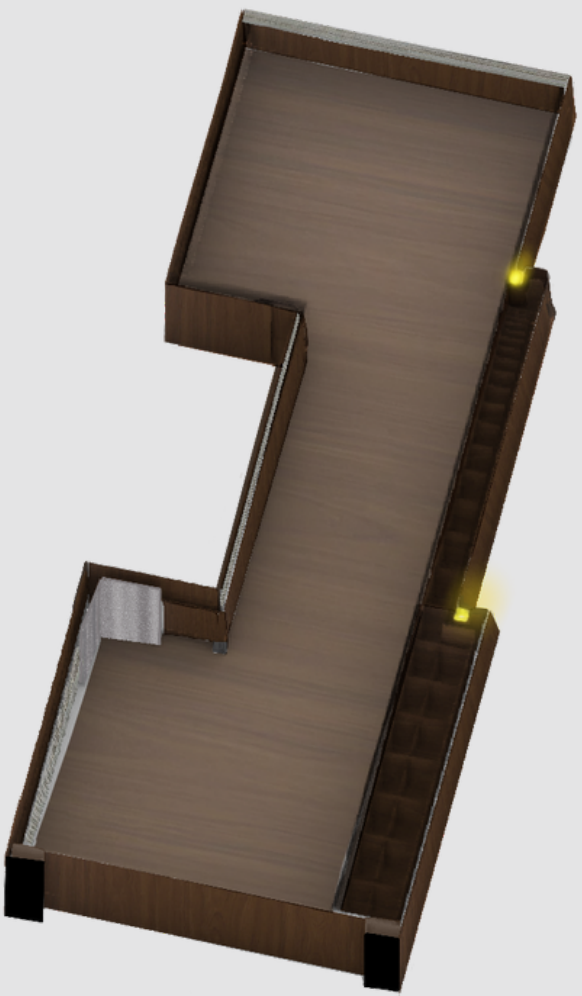
The project was based on a detail that is taken from studio class. The detail was seen & viewed by an engineer in order to get feedback and get to communicate to see what is missing or needs to be improved. For the storage shelf a recuta lux light is placed which is specified for shelving and is placed to lighten the place for storage items which is considered as an accent/ task light. The wire cord and light is embedded inside in order to lighten the space and use the coffee table for other purpose.



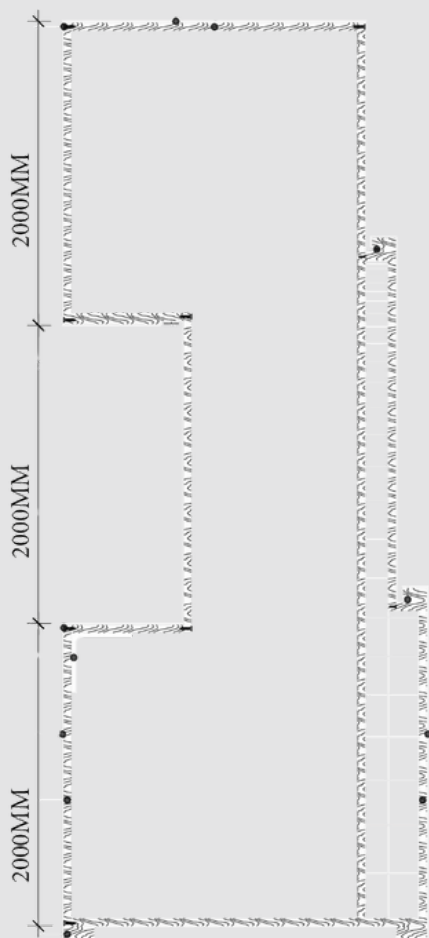
Render Process of applying materials



Detail Render



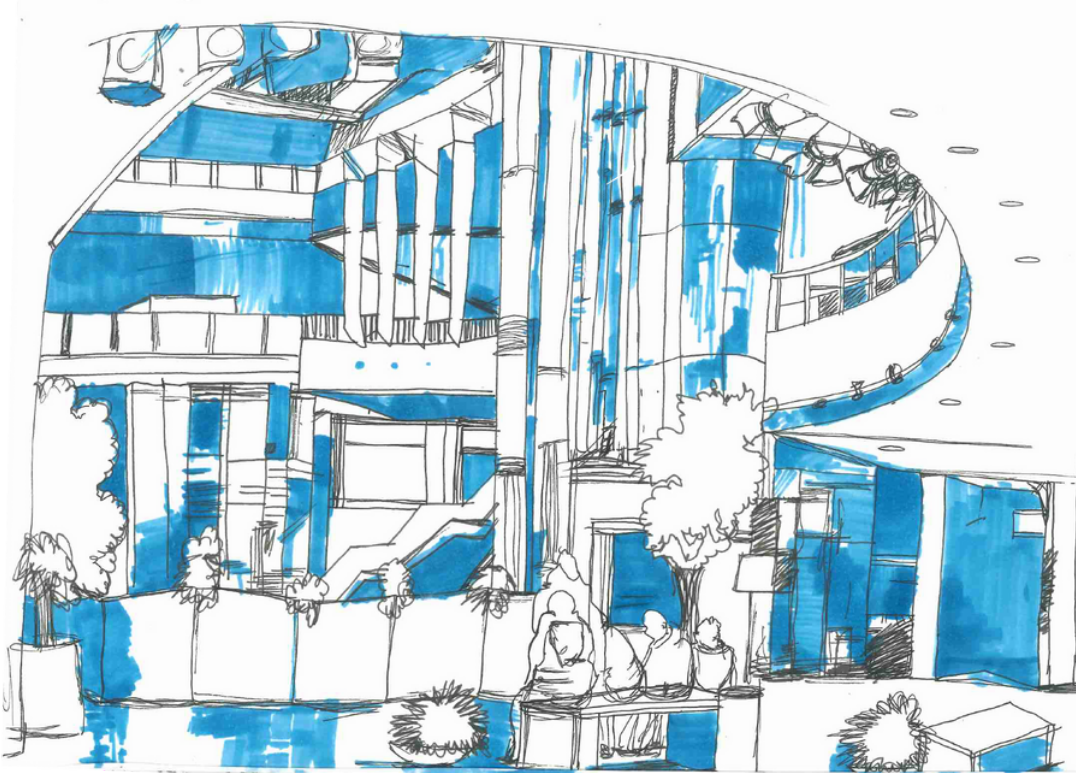
Detail A:



SKETCHING

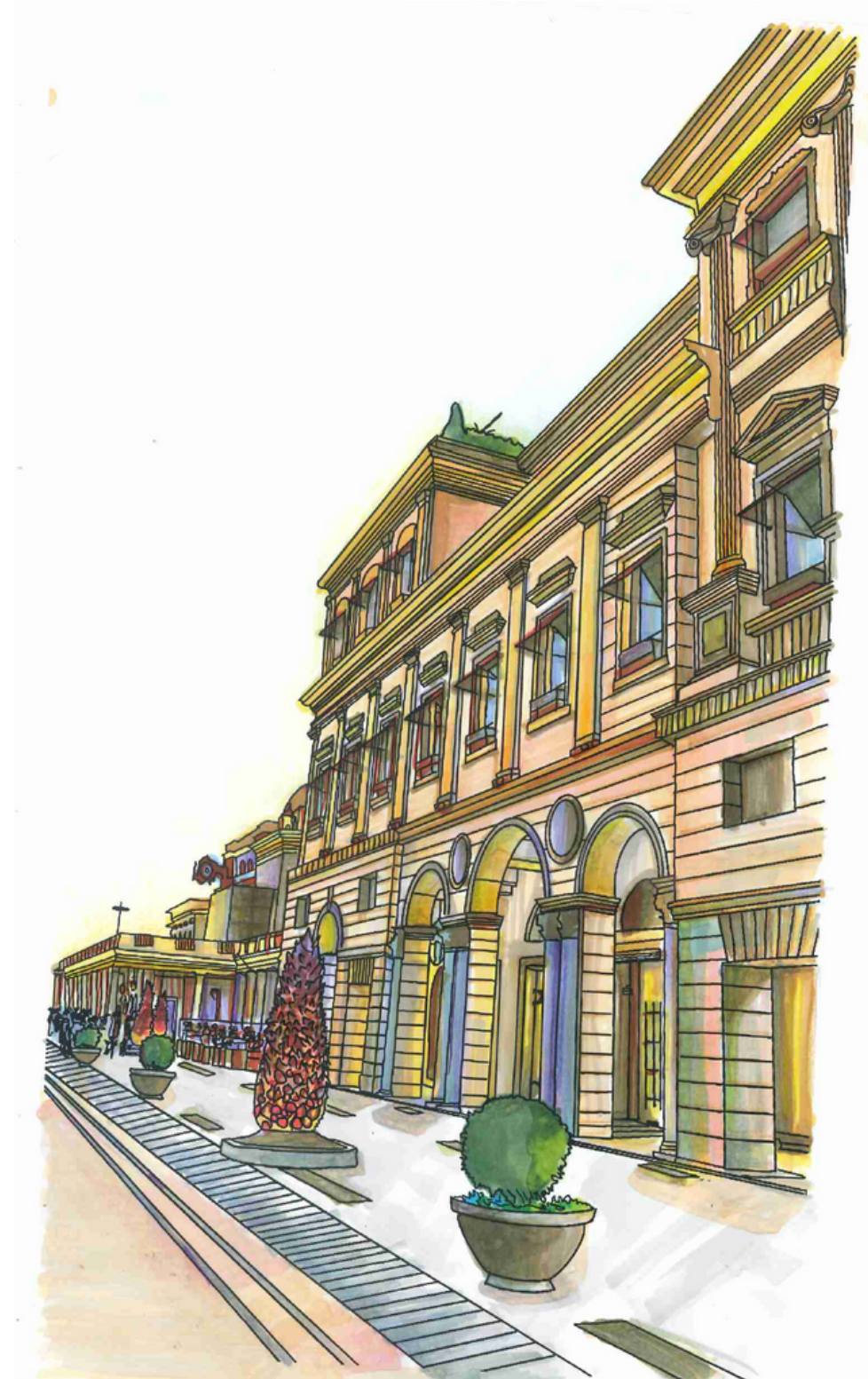
Lines Sketch - Based from a photo

This is a coloring activity. Experimenting colors in interior space and highlighting and emphasize shadows and light.



Lines Sketch - Based from a photo

The drawing shows a sketch of an atrium. The drawing is based on lines practice from a photo. After drawing I started highlighting shadows and light in different area in the space.



Coloring - Based from a photo I took

This drawing was based on experimenting colors. The colors had to be from the photo.